



Switchgears type BPP-0404, BPP-0505, BPP-0606

for rated voltage 500V



Switchgears type BPP-0404, BPP-0505, BPP-0606 are devices designed for use in underground mining pits in non-explosive coal dust conditions and on the ground.

Switchgears type BPP-0404, BPP-0505, BPP-0606 are designed for connecting and distributing power in mine distribution three-phase grid with isolated star point transformer (IT system) for rated grid voltage of 500V.

Wires are connected to the block via cable clamps through cable glands.

TECHNICAL DATA:

ingress protection	IP54
insulation rated voltage of main circuits	660 V
rated power supply voltage	3x500V,50Hz,IT grid
rated current of the BPP-0404 outlets	160A
rated current of the BPP-0505 outlets	250A
rated current of the BPP-0606 outlets	400A
number of outlets	2
dimensions	1280 x 940 x 400mm (H x W x D)

CONSTRUCTION

Switchgears is composed of a housing mounted on a frame construction, equipped with brackets. The frame construction allows the device to be hung on the pit wall.

MODE OF OPERATION

Blocks type BPP-0404, BPP-0505, BPP-0606 are equipped with fuse disconnecter Q1, Q2. The fuse disconnecter position can be locked by putting a lock on its drive lever.

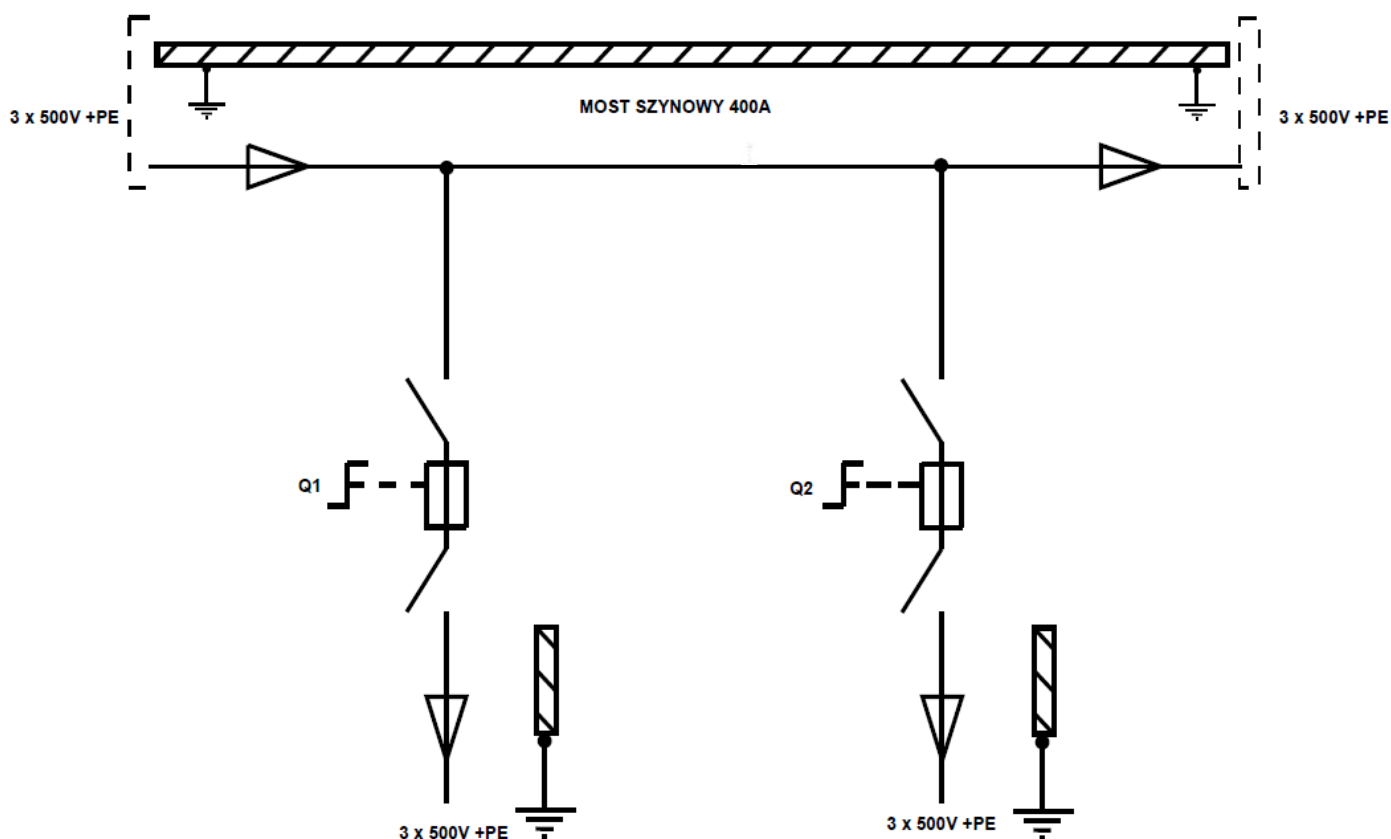
Turning on/off the outlet on is carried out by fuse disconnecter.

SCHEMATIC DIAGRAM

Legend:

Most Szynowy – Bus Bridge

Q1, Q2 – Fuse disconnecter



Orders should be submitted in writing or by fax to the address: